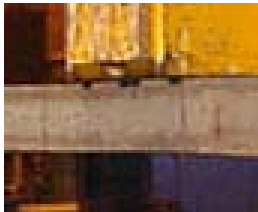
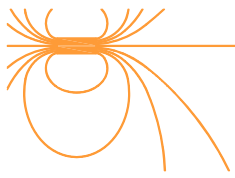


# FELEMAMG

*magnetism*



## **THREE-POLES ELECTROMAGNETS FOR HANDLING BILLETS TYPE "FBD"**



100 % OF THE POWER IS UNIFORMLY DISTRIBUTED ACROSS THE FULL LENGTH OF THE MAGNETIC CIRCUIT.

MAXIMUM SAFETY FOR LAYER HANDLING.

## DESCRIPTION:

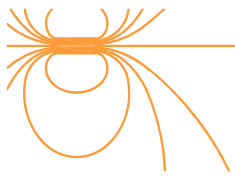
Specially designed for handling long and heavy products with high temperatures (Max. 600°C), as blooms, billets, etc. The FBD electromagnets have a special design which ensures the same magnetic power in both center and ends of the electromagnet. In this way, a safety transport of the ends pieces on the layer to handle is guaranteed.

A careful and robust construction provide a high protection degree. They are capable of withstanding maximum production demands.

The suitable installation will always be composed of two electromagnets mounted on a beam. FELEMAMG supplies a fixed beam or a telescopic guiding beam depending on the length of the product. With these beam and magnets, FELEMAMG also supplies the electric equipment to feed, protect and control the magnet, with the following main specifications:

- Lead or Ni-Cd emergency batteries to feed the magnets around 20 minutes in case of general power breakdown.
- System of secure transport RST type.
- Light and acoustic signals.
- Automatic opening and locking arm system in case of telescopic guiding beams.
- Selection of magnets to be energized.
- Regulation of magnetic force.





## APPLICATIONS:

Designed for handling long and heavy products. FELEMAMG offers a wide range of units, with different sizes in order to adapt them to the dimensions of the pieces and to the layer of billets to handle.



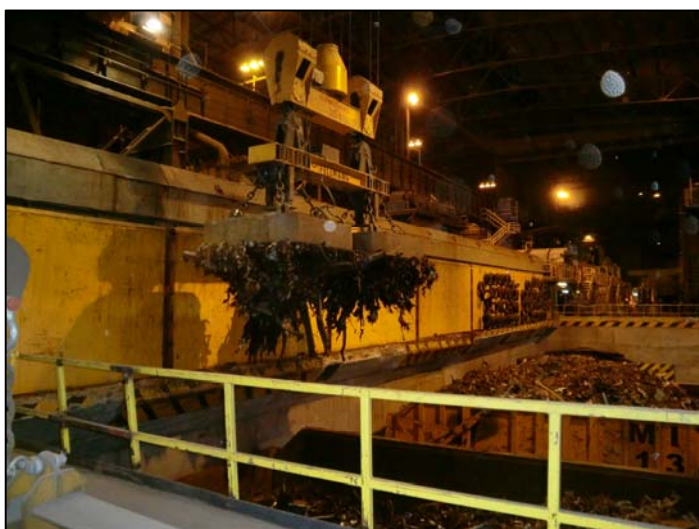
## DATA NECESSARY FOR STUDY:

- Section of billets.
- Number of elements to handle (Layer)
- Crane data.
- Maximum weight.
- Length of the billets.

**MOVING POLES  
ELECTROMAGNETS  
FOR HANDLING OF  
PROFILES BUNDLES**



**SPECIAL ELECTROMAGNETS  
FOR SCRAP HANDLING**



**RECTANGULAR  
ELECTROMAGNETS  
AND ELECTROPERMANENT  
MAGNETS  
FOR HANDLING PLATES**

